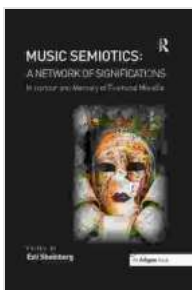


Delving into the Network of Significations: Exploring the Interconnected Web of Language and Meaning

Language is not merely a collection of disparate words and grammar rules. It is a complex network of interconnected meanings and significations, where each element draws its significance from its relationship to others. This network of significations is a dynamic and ever-evolving entity, shaped by cultural, historical, and social contexts.

In this article, we will explore the concept of the network of significations, examining its structure, dynamics, and implications for understanding language, communication, and the human experience. By unraveling the intricate web of meanings that connect words, symbols, and ideas, we gain a deeper appreciation for the multifaceted nature of language and its profound impact on our perception of the world.



Music Semiotics: A Network of Significations: In Honour and Memory of Raymond Monelle

by Eugene Batterson

★★★★☆ 4.2 out of 5

Language : English

File size : 13834 KB

Screen Reader : Supported

Print length : 366 pages

FREE

DOWNLOAD E-BOOK



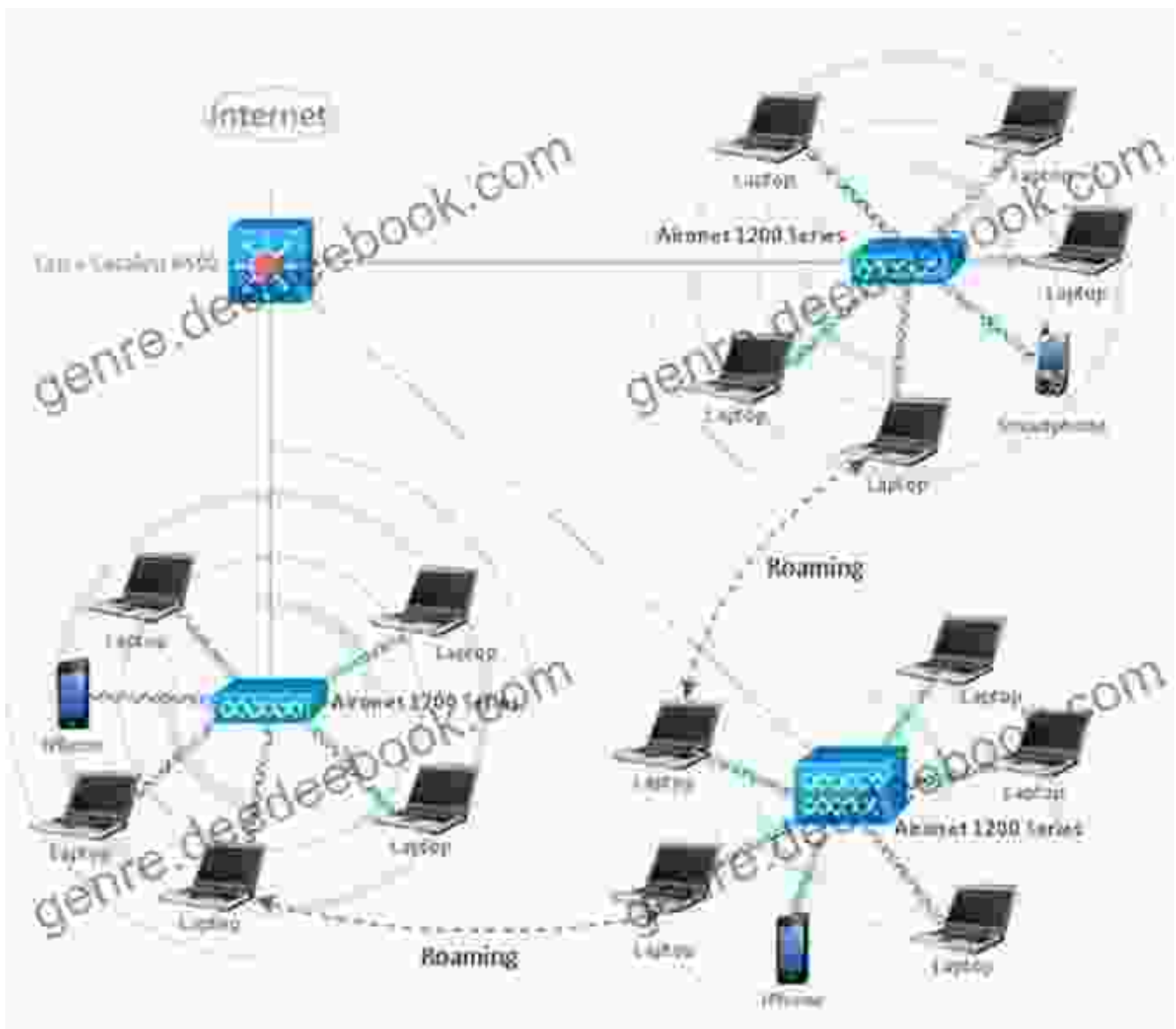
Structure of the Network of Significations

The network of significations is organized around a central axis of signification, which is the basic unit of meaning. A signifier (a word, symbol, or image) represents a signified (a concept, object, or idea). The relationship between the signifier and signified is arbitrary, as there is no inherent connection between the two. However, this relationship is socially and culturally constructed, giving the signifier its meaning within a particular context.

The network of significations is a hierarchical structure, with different levels of abstraction. At the most basic level are concrete signifiers, which refer to specific objects or events. Abstract signifiers, on the other hand, represent broader concepts or ideas. The meaning of a signifier can shift depending on its position within the network, as it interacts with other signifiers and takes on new associations.

For example, the word "dog" can refer to a specific breed of dog, such as a German shepherd, or to the general concept of a canine companion. The meaning of the word "dog" changes depending on the context in which it is used and the other signifiers it is associated with.

Dynamics of the Network of Significations



The network of significations is a dynamic and ever-changing entity. New words and concepts are constantly being added, while others fall out of use. The meanings of signifiers can also shift over time, as cultural and social contexts evolve.

One of the most important dynamic forces in the network of significations is the process of signification. Signification is the process by which a signifier

represents a signified. This process is not a one-to-one correspondence, but rather a complex and multifaceted relationship.

The meaning of a signifier is not fixed, but rather emerges through its interactions with other signifiers and the context in which it is used. For example, the word "freedom" can have different meanings depending on the political, social, and historical context in which it is used.

Implications for Language, Communication, and the Human Experience

The network of significations has profound implications for our understanding of language, communication, and the human experience. First, it highlights the importance of context in understanding the meaning of language. The meaning of a word or phrase is not fixed, but rather is shaped by the context in which it is used.

Second, the network of significations reveals the interconnectedness of language and thought. The words we use to express our thoughts and ideas are not simply neutral labels, but rather are part of a complex web of meanings that shape our understanding of the world.

Third, the network of significations underscores the importance of creativity and interpretation in communication. The meaning of a message is not simply transmitted from one person to another, but rather is actively constructed through the interaction of the signifiers and the context in which they are used.

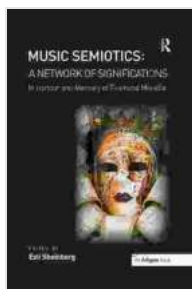
The network of significations is a vast and intricate web of meanings that connects words, symbols, and ideas. It is a dynamic and ever-evolving

entity, shaped by cultural, historical, and social contexts.

Understanding the network of significations is essential for understanding language, communication, and the human experience. By unraveling the intricate web of meanings that connect words, symbols, and ideas, we gain a deeper appreciation for the multifaceted nature of language and its profound impact on our perception of the world.

References

- Saussure, F. de. (1983). Course in general linguistics. New York: McGraw-Hill.
- Barthes, R. (1977). Image-music-text. New York: Hill and Wang.
- Derrida, J. (1976). Of grammatology. Baltimore: Johns Hopkins University Press.



Music Semiotics: A Network of Significations: In Honour and Memory of Raymond Monelle

by Eugene Batterson

★★★★☆ 4.2 out of 5

Language : English

File size : 13834 KB

Screen Reader: Supported

Print length : 366 pages

FREE

DOWNLOAD E-BOOK





Basics Beginner Guide To Stage Sound

Start with a good source. The quality of your sound will be limited by the quality of your source material. Make sure that your microphones are placed correctly and...



Kiwi in the Realm of Ra: Exploring the Mystical Kiwi Fruit

Origins and Domestication The kiwi, a delectable fruit with an enigmatic history, traces its origins to the verdant valleys of China. Known as "yang tao" in...